



COMMERCIAL CONSTRUCTION PROJECT IN CRAWLEY, WEST SUSSEX FOR MCS

Project Description

Logistic Hub – Manor Royal

Construction of a new Hermes logistics hub for Arcus PCD consisting of 85000ft² shell with external concrete aprons, hard landscaping, paving and highway works.

- Cut and engineered fill with GPS guided plant to external and internal footprint

Project Details

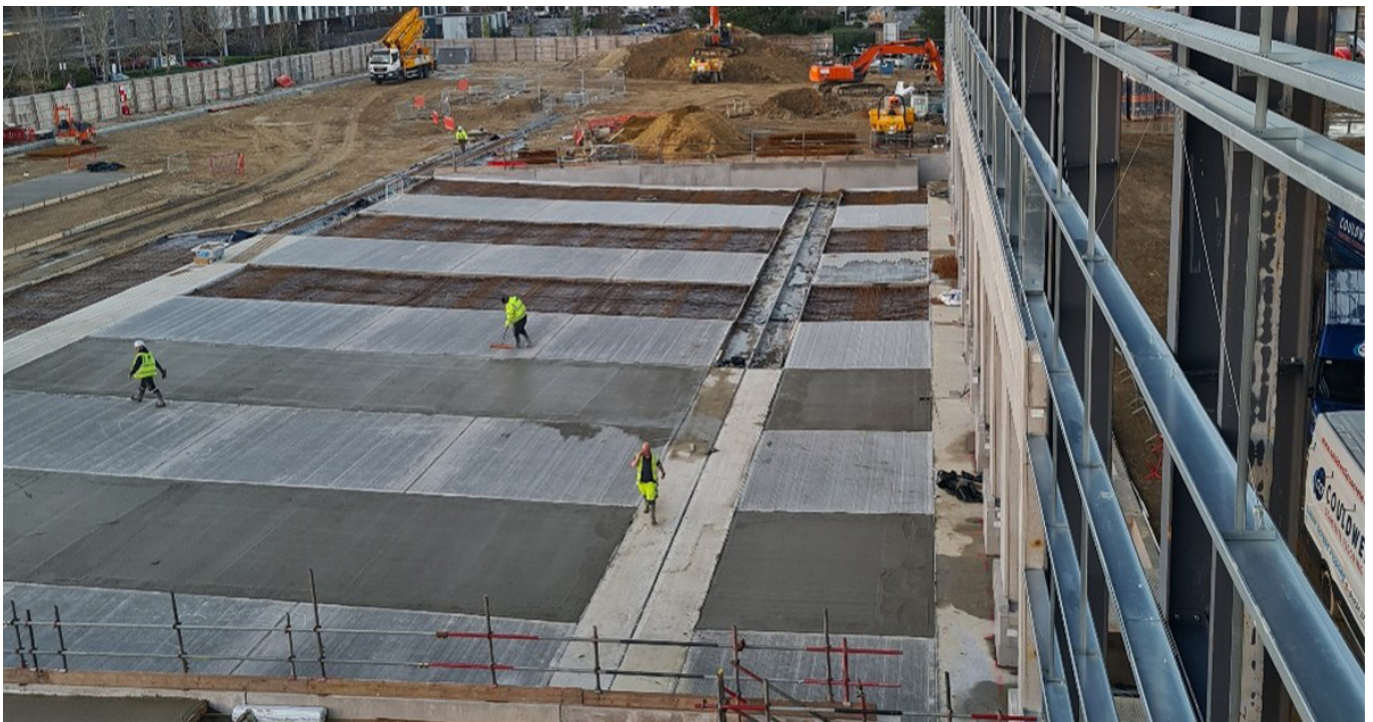
Client: MCS

Start date: January 2022

Completion Date: June 2022

Value £1.3m

- Complete external SW drainage network with extensive channel drainage, interceptors, silt and wash down traps.
- Foul drainage and offsite connections to existing sewers
- Highway works
- Complete external works package including mixture of block paving, permeable paving, brushed concrete aprons, street furniture
- BWIC extensive ducting infrastructure and services



MCS – LOGISTIC HUB – MANOR ROYAL, CRAWLEY, West Sussex 01



MCS – LOGISTIC HUB – MANOR ROYAL, CRAWLEY, West Sussex 02



MCS – LOGISTIC HUB – MANOR ROYAL, CRAWLEY, West Sussex 03